

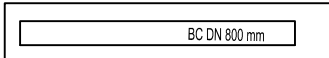
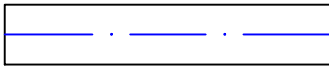
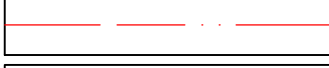

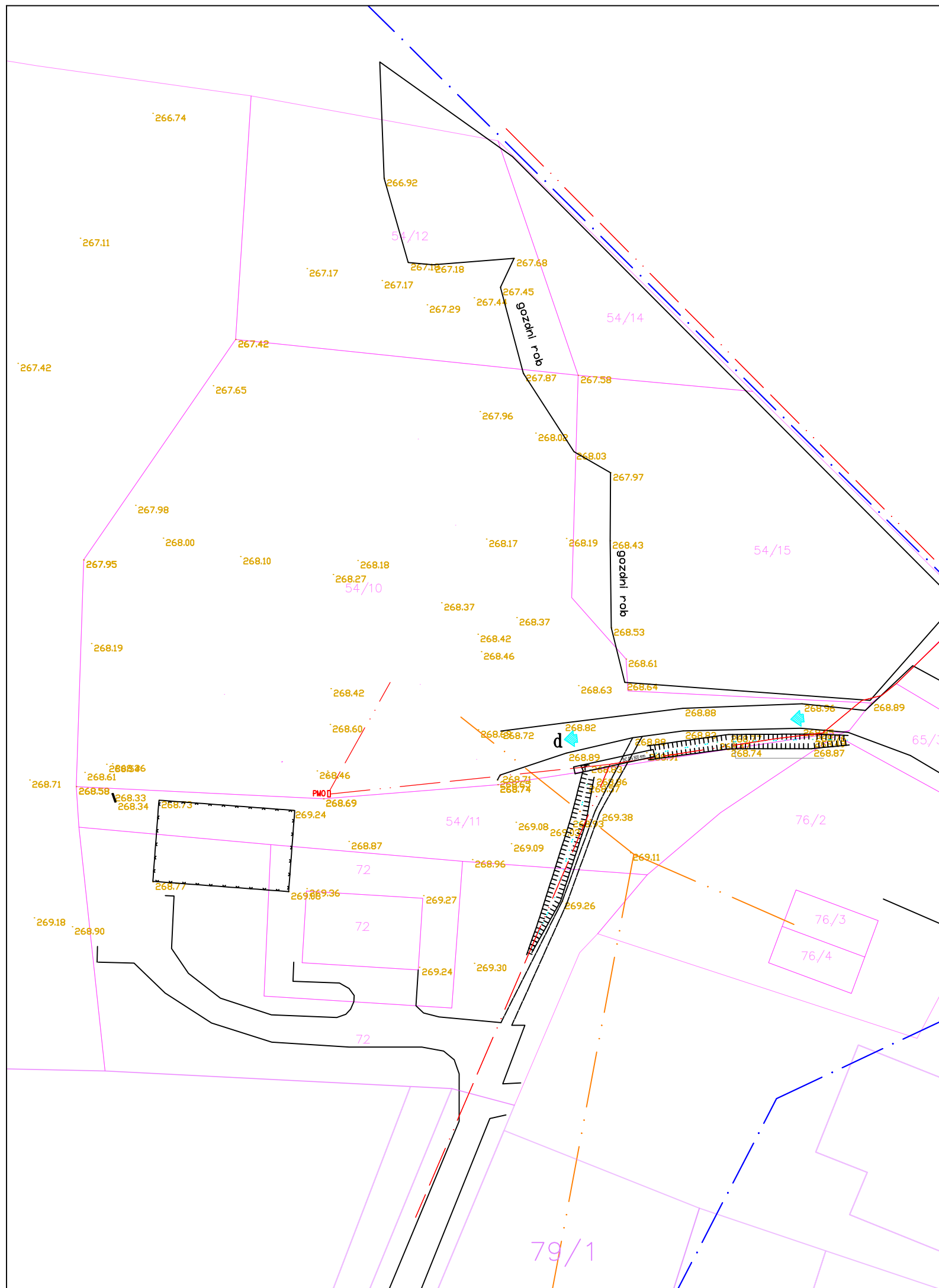



LEGENDA:

-  *obstoječi objekti se rušijo*
-  *d* *dostop*
- obstoječi komunalni vodi:**
-  *obstoječ propust*
-  *obstoječ vodovod*
-  *obstoječ NN vod*
-  *obstoječ TK vod*



Sprememba:		Datum:		Opis spremembe:		Ime:		Podpis:	
 <p>Laporska cesta 46, SI-2319 Poljčane Telefon: +386 (0) 40 238 438 E-mail: info@smel.si, www.smel.si</p>						Investitor/naročnik			
						OBČINA SLOVENSKA BISTRICA Kolodvorska ulica 10, 2310 Slovenska Bistrica			
						Objekt/lokacija:			
						VRTEC LAPORJE Laporje 31, 2318 Laporje			
						Načrt:			
						ZUNANJA UREDITEV IN KANALIZACIJA			
						Vsebina risbe:			
						Situacija obstoječega stanja			
Odg. vodja proj.:		J. Stoporko, u.d.i.a.		ZAPS A-0146					
Odg. projektant:		K. Hudoklin, u.d.i.a.		ZAPS A-1841					
Projektant:		S. Centrih, d.i.p.							
Št. projekta:		02/2018		Faza:		PZI		Merilo:	
Št. načta:		01/2018-ZU		Datum:		marec 2018		Št. risbe:	
						1:250		3/1-5.2	